

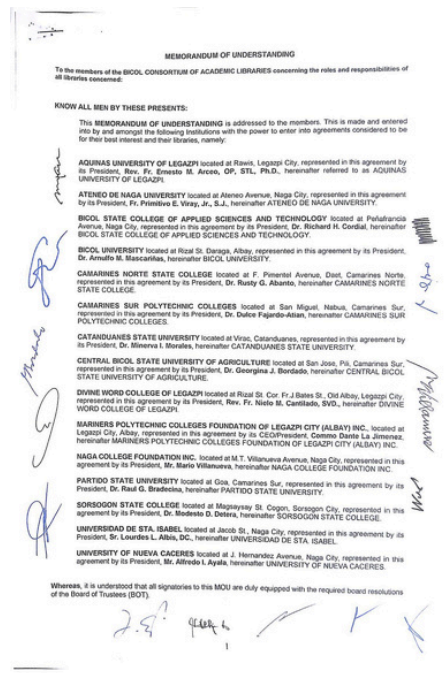


# ATENEO DE NAGA UNIVERSITY: EXPANDING ACCESS TO KNOWLEDGE THROUGH LIBRARY CONSORTIA

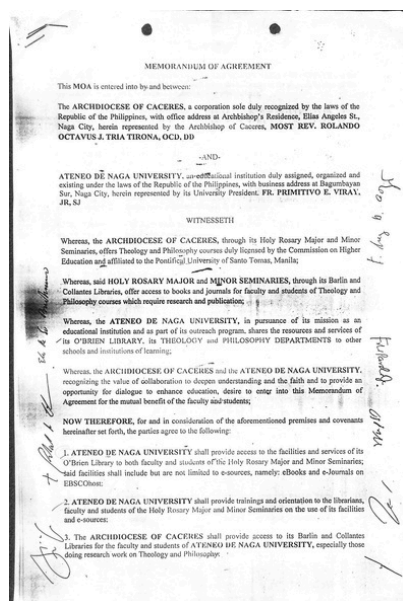
## Collaborative Partnerships

Ateneo de Naga University (ADNU), through the James J. O'Brien, S.J. Library (JOBL), promotes equitable access to academic resources through active membership in national and regional library consortia. These partnerships allow the University community and partner institutions to benefit from shared scholarly materials, capacity-building programs, and research collaboration.

JOBL is a founding member of the Jesuit Higher Education Library Consortium (JHELCon), established in 2013 among eight Jesuit higher education institutions in the Philippines. ADNU also maintains a formal Memorandum of Agreement with the Archdiocese of Caceres to provide library access and orientation to students and faculty of the Holy Rosary Major and Minor Seminaries. In 2018, the University further expanded its reach through participation in the Bicol Consortium of Academic Libraries (BCAL), composed of fifteen higher education institutions in the region.



Source: [https://drive.google.com/file/d/1ygJN\\_zh81gKjJIUhoLx4TRMSWt0nGu5U/view](https://drive.google.com/file/d/1ygJN_zh81gKjJIUhoLx4TRMSWt0nGu5U/view)



Source: [https://drive.google.com/file/d/1VjLkPmsBgUo2RhP8nd\\_65741Be9bZ\\_It/view](https://drive.google.com/file/d/1VjLkPmsBgUo2RhP8nd_65741Be9bZ_It/view)

## Implementation and Scope

Through JHELCon, member libraries share information resources, coordinate document delivery services, and participate in professional training and development initiatives. JOBL contributes to these shared efforts by providing interlibrary access, research assistance, and reference services aligned with fair use and copyright principles.

Within the BCAL partnership, ADNU supports the creation of a union catalog of Bicol collections, maintains a database of thesis and dissertation abstracts, and collaborates on group licensing of digital resources. These collective efforts improve research quality and accessibility for faculty and students across participating institutions.

## Social and Developmental Impact

The library consortia partnerships have enhanced resource availability and fostered collaboration within and beyond the University. Students and researchers benefit from improved access to academic materials, while member institutions share expertise and best practices in library and information management.

Through these collaborations, ADNU demonstrates its commitment to inclusive education, knowledge sharing, and the Jesuit tradition of forming competent, engaged learners who contribute to academic excellence and social development.